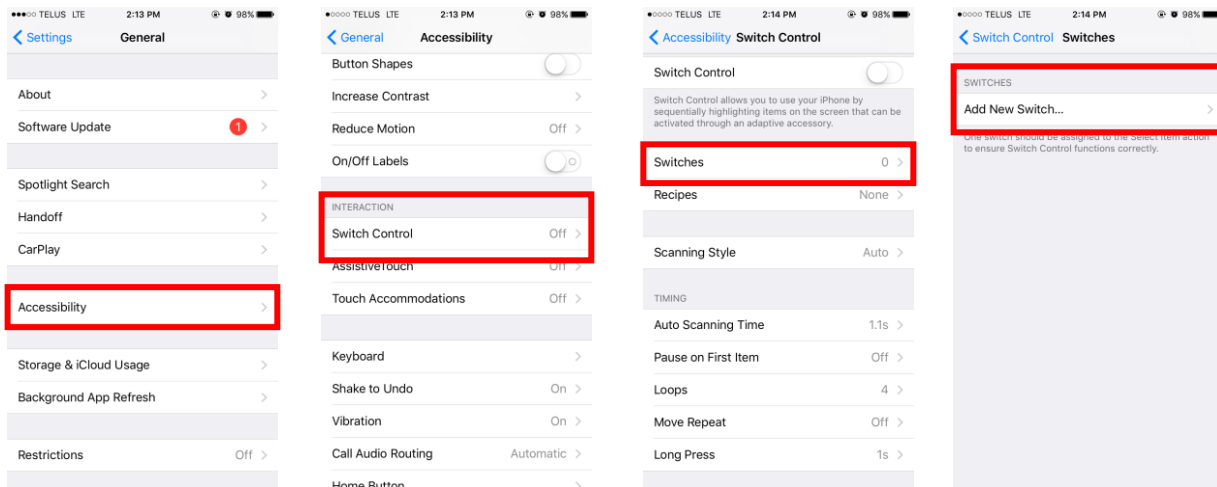




IOS (Apple) Devices – How to Add a Switch

Before you add an external switch, you need to connect it to your device before it will show in the list of switches. We added our switch via Bluetooth connection.

Go to Settings > General > Accessibility > Switch Control > Switches.

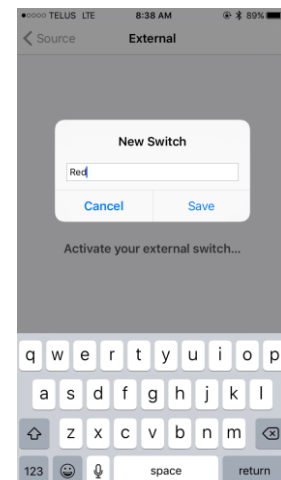
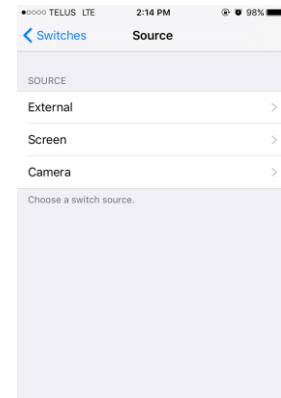


Add a switch:

Depending on the switch source, select from the three listed options.

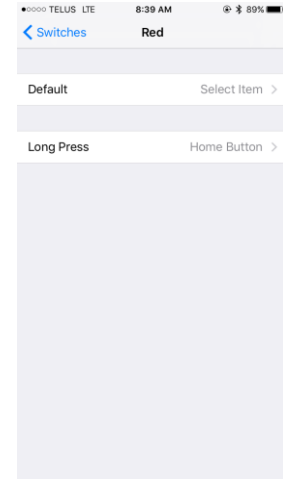
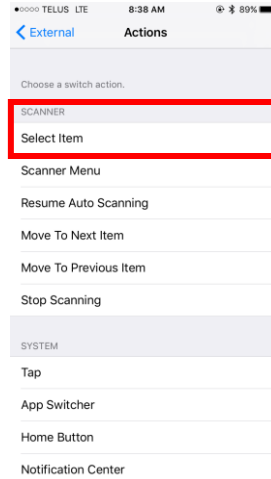
- External: Choose a Bluetooth switch or 'Made for iPhone' switch.
- Screen: Tap the screen to use a switch or press and hold.
- Camera: Move your head to use the iPhone front-facing camera as a switch. You can use the camera as two switches: One when you move your head to the left and the other when you move your head to the right.

It will request you to activate your switch, so simply press your switch and assign a name to it



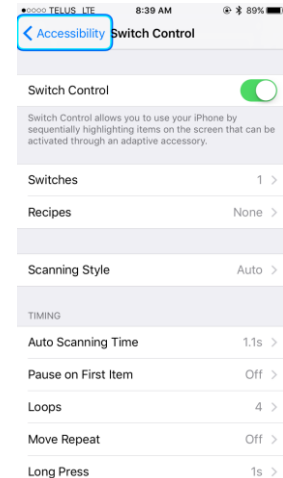


You will now select a switch Action (primary function of the switch) – we will assign the ‘select item’ function. The Long press option allows you to assign a second function to the same switch, assigning this to a ‘home button’ function can be a useful shortcut.



At the top, slide the Switch control to on – you should see the scanning highlight box appear and start scanning through items on the screen.

You should now be able to use your paired switch to access the functions of your phone.



Note: At the bottom of your Accessibility menu check your Accessibility shortcut:– set it to turn switch access on and off by simply triple-clicking the home button

