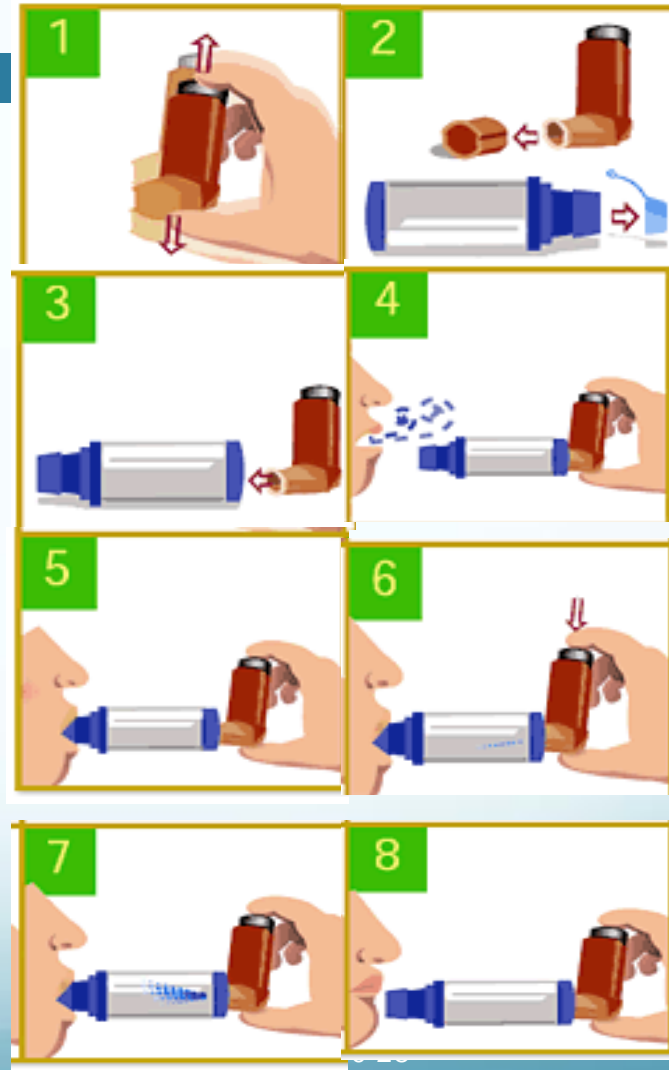


Repeat the following steps for each puff of your inhaler.

How To Use A Puffer (MDI with a Spacer Device

- 1) Shake the MDI
- 2) Remove the caps
- 3) Attach MDI to spacer
- 4) Exhale (away from spacer)
- 5) Seal lips around spacer mouthpiece
- 6) Tilt chin up slightly (not shown)
- Depress MDI into spacer device once
- 7) Inhale **slowly & deeply**
- 8) Hold breath 5 – 10 seconds



If you are unable to manage steps 7 and 8 you can take 3 – 5 slow breaths in and out of spacer keeping your lips sealed. Then hold your breath for 5 seconds.