



Android Devices – How to Set up Switch Access

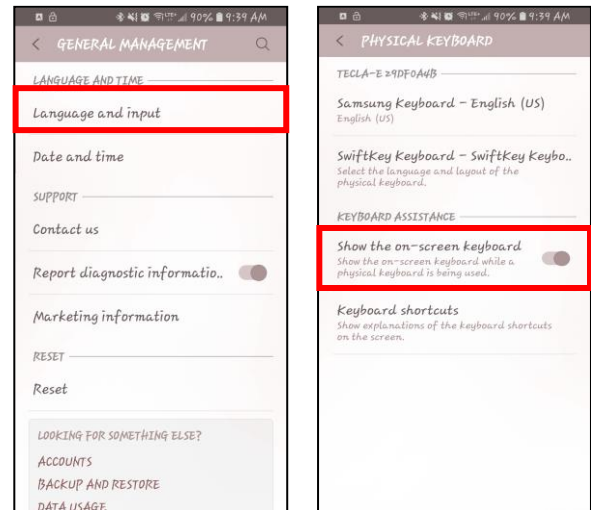
After you've connected an external switch device or keyboard (which we paired through Bluetooth), Android automatically hides the on-screen keyboard. To enter text with Switch Access, you need to re-enable the keyboard.

To re-enable the on-screen keyboard:
Open your Android device's Settings app.
Select **Language & input**.

Follow the steps for your Android version:

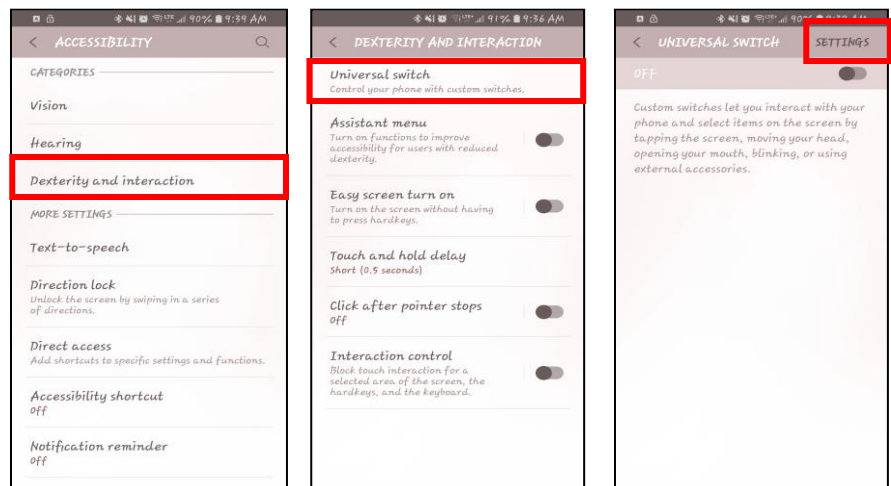
Android 7.0 and later: Select **Physical keyboard** > **Show virtual keyboard**.

Android 6.0 and earlier: Select **Current keyboard** > **Hardware (Show input method)**.

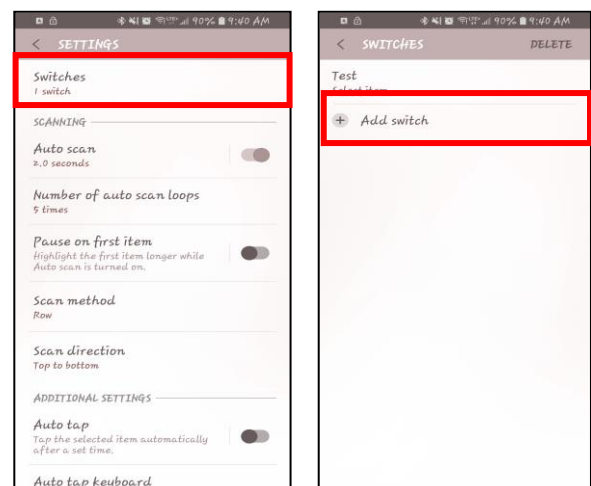


To add a switch:

Access the switch menu by going to Settings > Accessibility > Dexterity and interaction > Universal switch and click on 'settings'

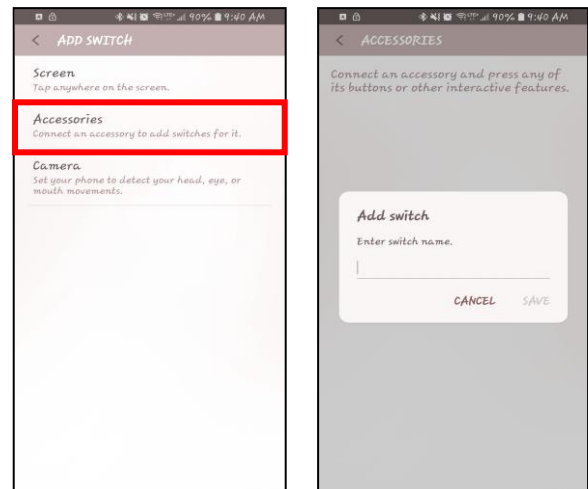


Select the switches option, and it will show a list of connected switches, if any have been previously added. To add a new switch, select the Add switch button.





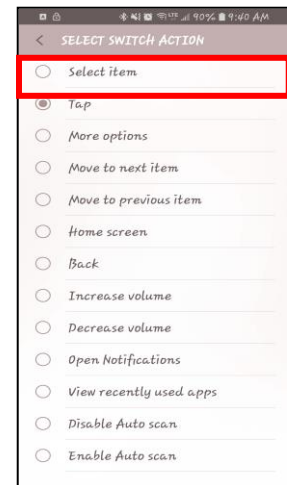
The device will prompt you to activate your switch; once activated, if the device registers the switch it will prompt you to name it.



You will now be prompted to select a switch action. If this is your first or only switch, the select item option is likely to be the most suitable.

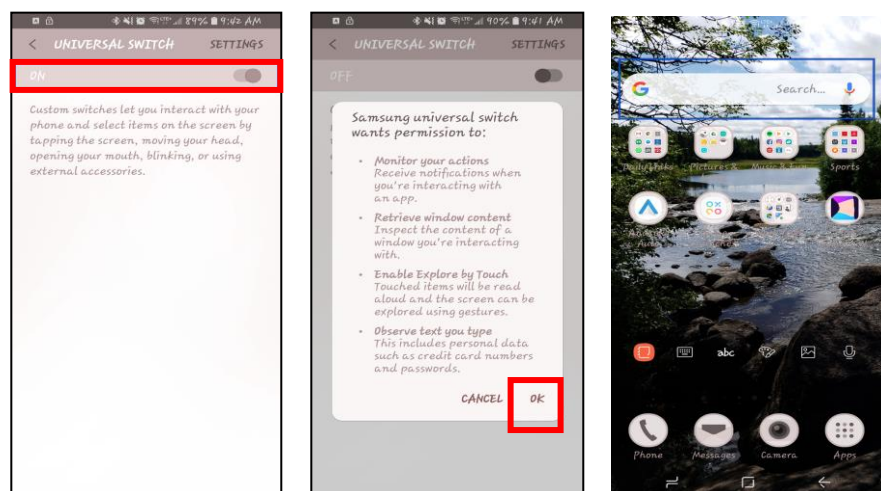
‘Select item’ simply means that every time the switch is activated, whichever item is highlighted will be selected.

For additional switches, any option can be selected as per the client’s needs.



Once you have added the switches you need, and assigned their functions, you will need to turn the Universal switch option on from the previous menu screen. When prompted, select OK from the dialog box.

If successfully set up, you will start seeing the blue scanning box appear around items on your screen.



NB. Menu layouts will vary slightly on different android devices – the screenshots shown are taken from a Samsung S9

